

Test Report

No. : CE/2007/41765

Date : 2007/04/16

Page : 1 of 5

CHIN MOU CO., LTD.

8F-6, NO. 79, SEC. 1, HSIN TAI WU RD., HSI-CHIH, TAIPEI HSIEN,

TAIWAN, R. O. C.



The following sample(s) was/were submitted and identified by/on behalf of the client as :

Sample Description : ZYTEL
 Style/Item No. : FR52G30LX NC
 Sample Receiving Date : 2007/04/10
 Testing Period : 2007/04/10 TO 2007/04/16

=====

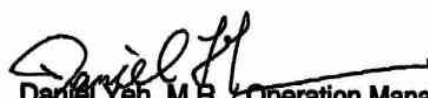
Test Requested : In accordance with the RoHS Directive 2002/95/EC, and its amendment directives.

Test Method : With reference to IEC 62321, Ed.1 111/54/CDV
 Procedures for the Determination of Levels of Regulated Substances in Electrotechnical Products.

- (1) Determination of Cadmium by ICP-AES.
- (2) Determination of Lead by ICP-AES.
- (3) Determination of Mercury by ICP-AES.
- (4) Determination of Hexavalent Chromium for non-metallic samples by UV/Vis Spectrometry.
- (5) Determination of PBB and PBDE by GC/MS.

Test Result(s) : Please refer to next page(s).

Conclusion : Based on the performed tests on submitted samples, the test results are **compliant with** the limits of RoHS Directive 2002/95/EC and its subsequent amendments.


 Daniel Yeh, M.R. / Operation Manager
 Signed for and on behalf of
 SGS TAIWAN LTD.

Test Report

No. : CE/2007/41765

Date : 2007/04/16

Page : 2 of 5

CHIN MOU CO., LTD.

8F-6, NO. 79, SEC. 1, HSIN TAI WU RD., HSI-CHIH, TAIPEI HSIEN,

TAIWAN, R. O. C.



Test results by chemical method (Unit: mg/kg)

Test Item (s):	Method (Refer to)	Result	MDL	RoHS Limit
		No.1		
Cadmium (Cd)	(1)	n.d.	2	100
Lead (Pb)	(2)	7	2	1000
Mercury (Hg)	(3)	n.d.	2	1000
Hexavalent Chromium Cr(VI) by alkaline extraction	(4)	n.d.	2	1000
Sum of PBBs	(5)	n.d.	-	1000
Monobromobiphenyl		n.d.	5	-
Dibromobiphenyl		n.d.	5	-
Tribromobiphenyl		n.d.	5	-
Tetrabromobiphenyl		n.d.	5	-
Pentabromobiphenyl		n.d.	5	-
Hexabromobiphenyl		n.d.	5	-
Heptabromobiphenyl		n.d.	5	-
Octabromobiphenyl		n.d.	5	-
Nonabromobiphenyl		n.d.	5	-
Decabromobiphenyl		n.d.	5	-
Sum of PBDEs (Mono to Nona) (Note 4)		n.d.	-	1000
Monobromobiphenyl ether		n.d.	5	-
Dibromobiphenyl ether		n.d.	5	-
Tribromobiphenyl ether		n.d.	5	-
Tetrabromobiphenyl ether		n.d.	5	-
Pentabromobiphenyl ether		n.d.	5	-
Hexabromobiphenyl ether		n.d.	5	-
Heptabromobiphenyl ether		n.d.	5	-
Octabromobiphenyl ether		n.d.	5	-
Nonabromobiphenyl ether		n.d.	5	-
Decabromobiphenyl ether		n.d.	5	-
Sum of PBDEs (Mono to Deca)		n.d.	-	-

TEST PART DESCRIPTION:

NO.1 : BEIGE PLASTIC PELLETS

Note : 1. mg/kg = ppm

2. n.d. = Not Detected

3. MDL = Method Detection Limit

4. According to 2005/717/EC DecaBDE is exempt.

5. "-" = Not Regulated

Test Report

No. : CE/2007/41765

Date : 2007/04/16

Page : 3 of 5

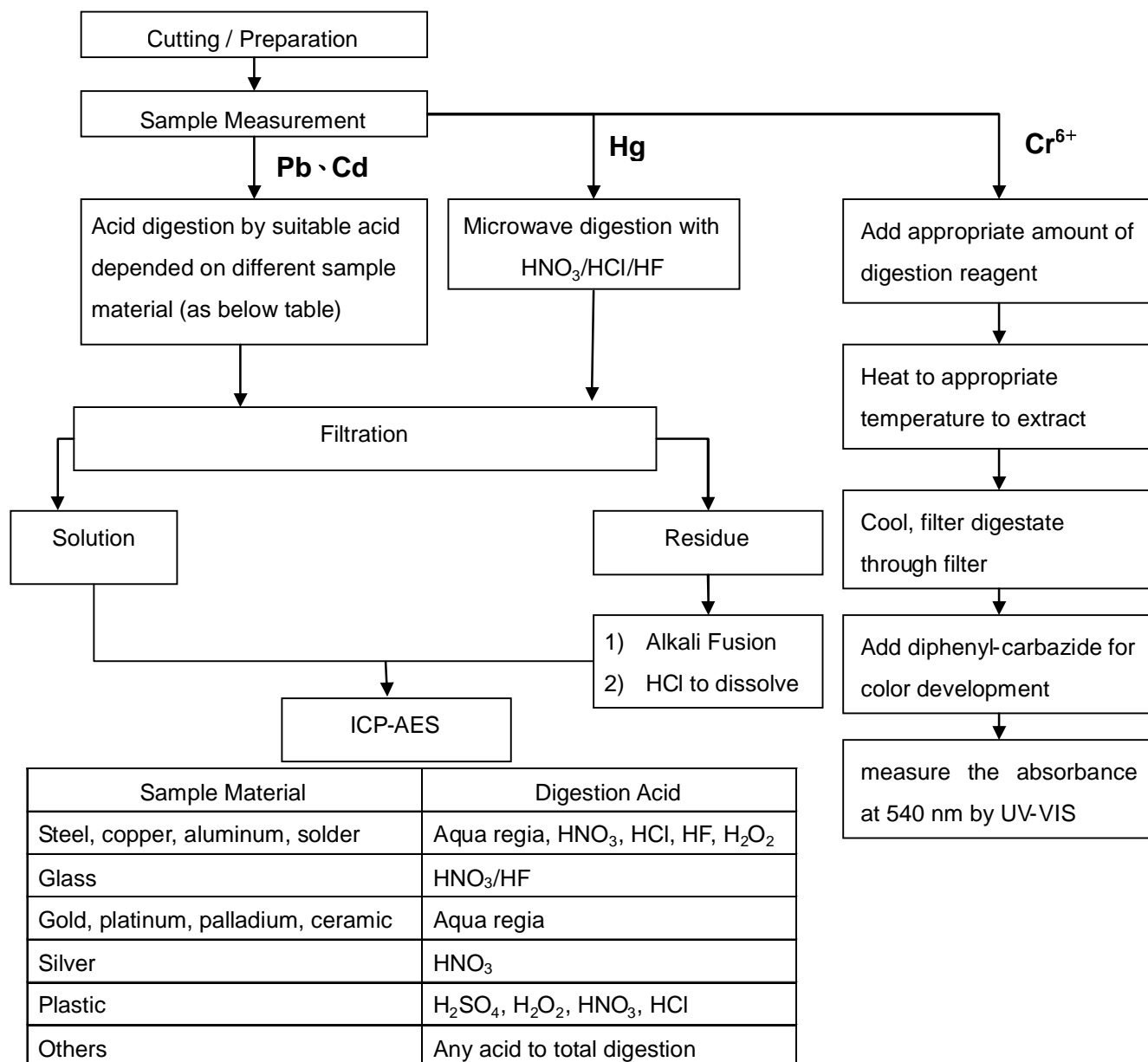
CHIN MOU CO., LTD.

8F-6, NO. 79, SEC. 1, HSIN TAI WU RD., HSI-CHIH, TAIPEI HSIEN,

TAIWAN, R. O. C.



- 1) These samples were dissolved totally by pre-conditioning method according to below flow chart.
(Cr⁶⁺ test method excluded)
- 2) Name of the person who made measurement: Troy Chang
- 3) Name of the person in charge of measurement: Daniel Yeh



Test Report

No. : CE/2007/41765

Date : 2007/04/16

Page : 4 of 5

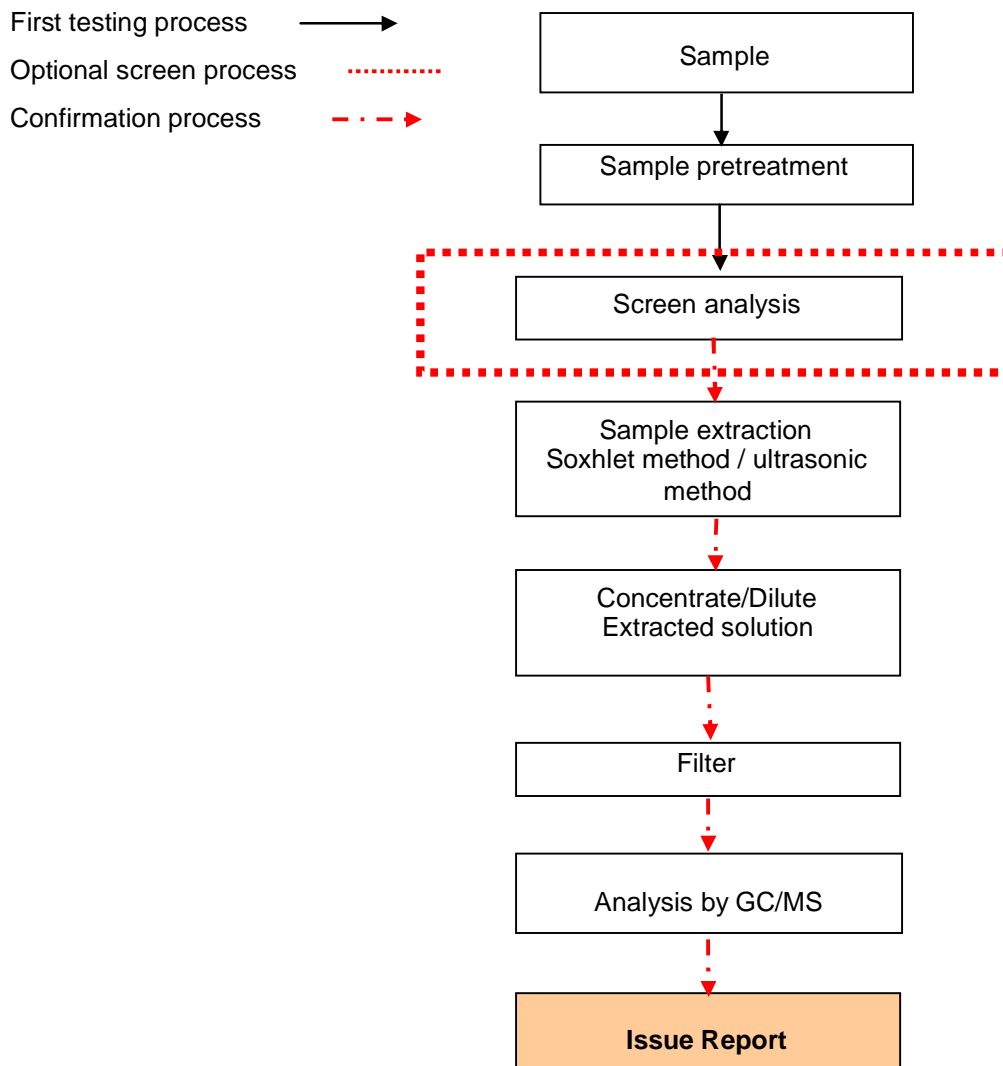
CHIN MOU CO., LTD.

8F-6, NO. 79, SEC. 1, HSIN TAI WU RD., HSI-CHIH, TAIPEI HSIEN,

TAIWAN, R. O. C.



PBB/PBDE analytical FLOW CHART



Test Report

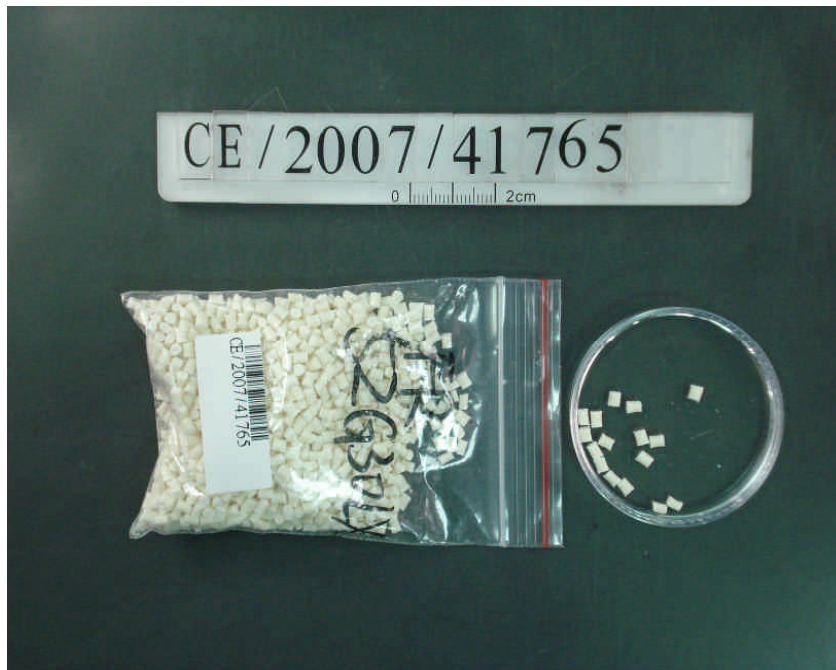
No. : CE/2007/41765

Date : 2007/04/16

Page : 5 of 5

CHIN MOU CO., LTD.

8F-6, NO. 79, SEC. 1, HSIN TAI WU RD., HSI-CHIH, TAIPEI HSIEN,
TAIWAN, R. O. C.



** End of Report **